

# Development Center Project

## *Construction Update*



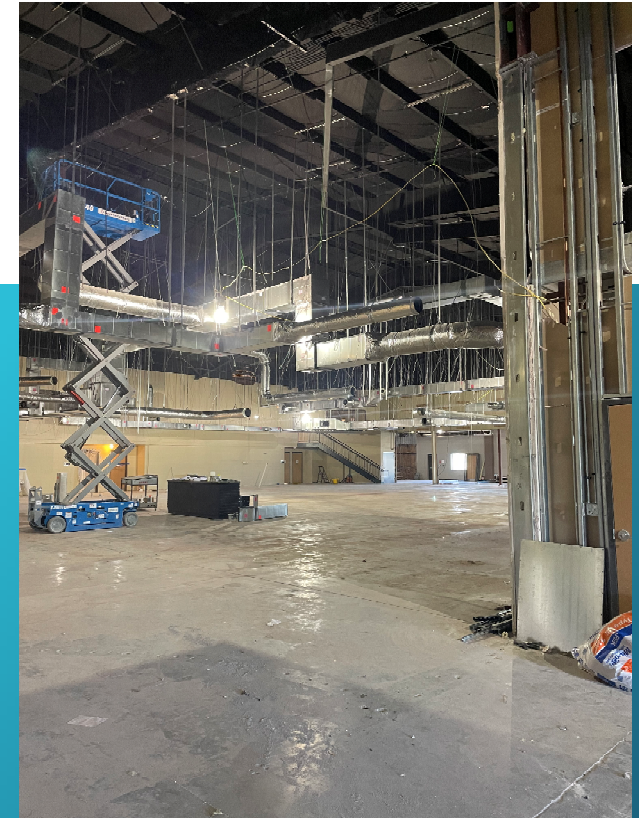
Duct Rough-in at old high school room

### **Current Activities:**

- Overhead Rough-in Continues
- Concrete pour back Completed
- Wall Layout Continues
- Framing of walls started



2<sup>nd</sup> Level Wall Framing



1<sup>st</sup> level Overhead Duct insulation and ceiling wires

### **Upcoming Activities:**

- Continue MEP Overhead Rough-in
- Layout of walls Complete
- Frame walls Continues
- In wall rough in starts
- Hang Sheetrock to start