

# Development Center Project

*Construction Update*



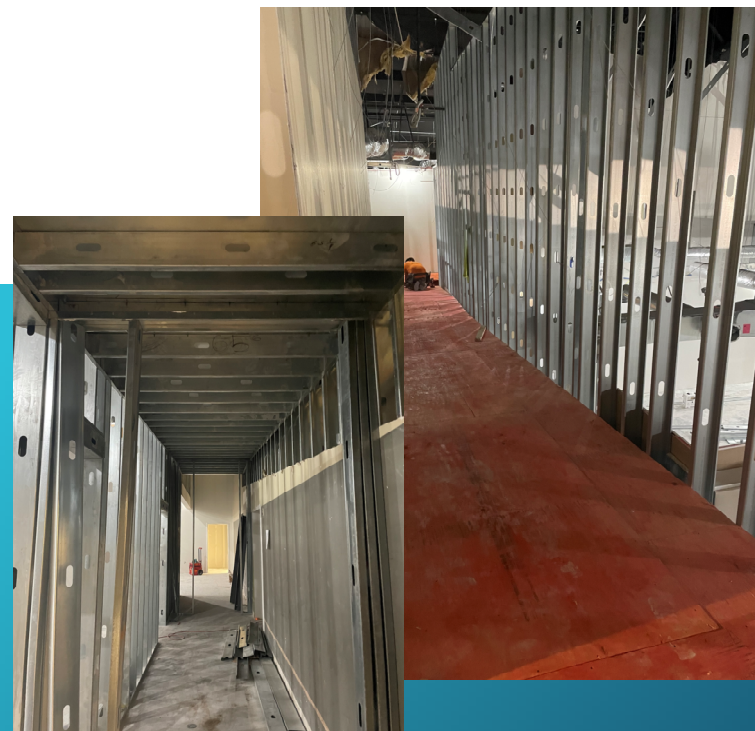
Chapel Ceiling



Ceiling Grid Installed

## Current Activities:

- Framing of walls Completes
- Sheetrock walls & Mud & Tape continues
- Painting Continues
- MEP rough-in continues (insulation and pulling wire)
- Ceiling Grid Started



Ramp framing and decking

## Upcoming Activities:

- Hanging of sheetrock Completes
- Mud & Tape sheetrock to Completes
- Painting Continues
- MEP rough-in continues
- Ceiling Grid Continues
- Ceiling Tile Starts
- Millwork Starts